



Tackling Root causes Upstream of
Unhealthy Urban Development

How to create healthier places: a multi-disciplinary qualitative study exploring the complex system of urban development decision-making

Dr Anna Le Gouais

Research Fellow, University of Bristol

Anna.legouais@bristol.ac.uk

[@annalegouais](https://twitter.com/annalegouais)

UKPRP 2023



Research Funders



University Consortium



Local Authority Partners



Professional Membership Partners







Public health

Urban planning

Public policy

Transport

Management

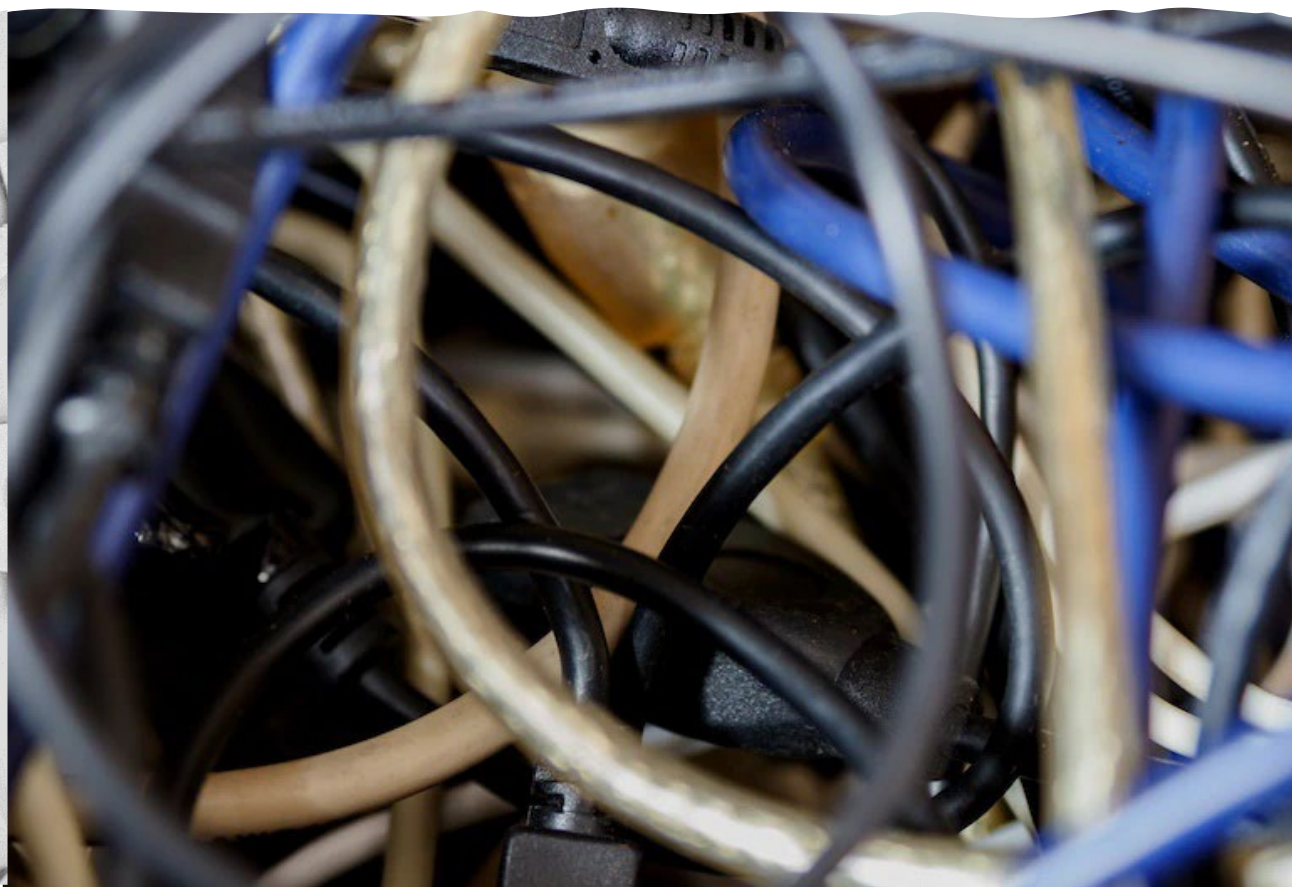
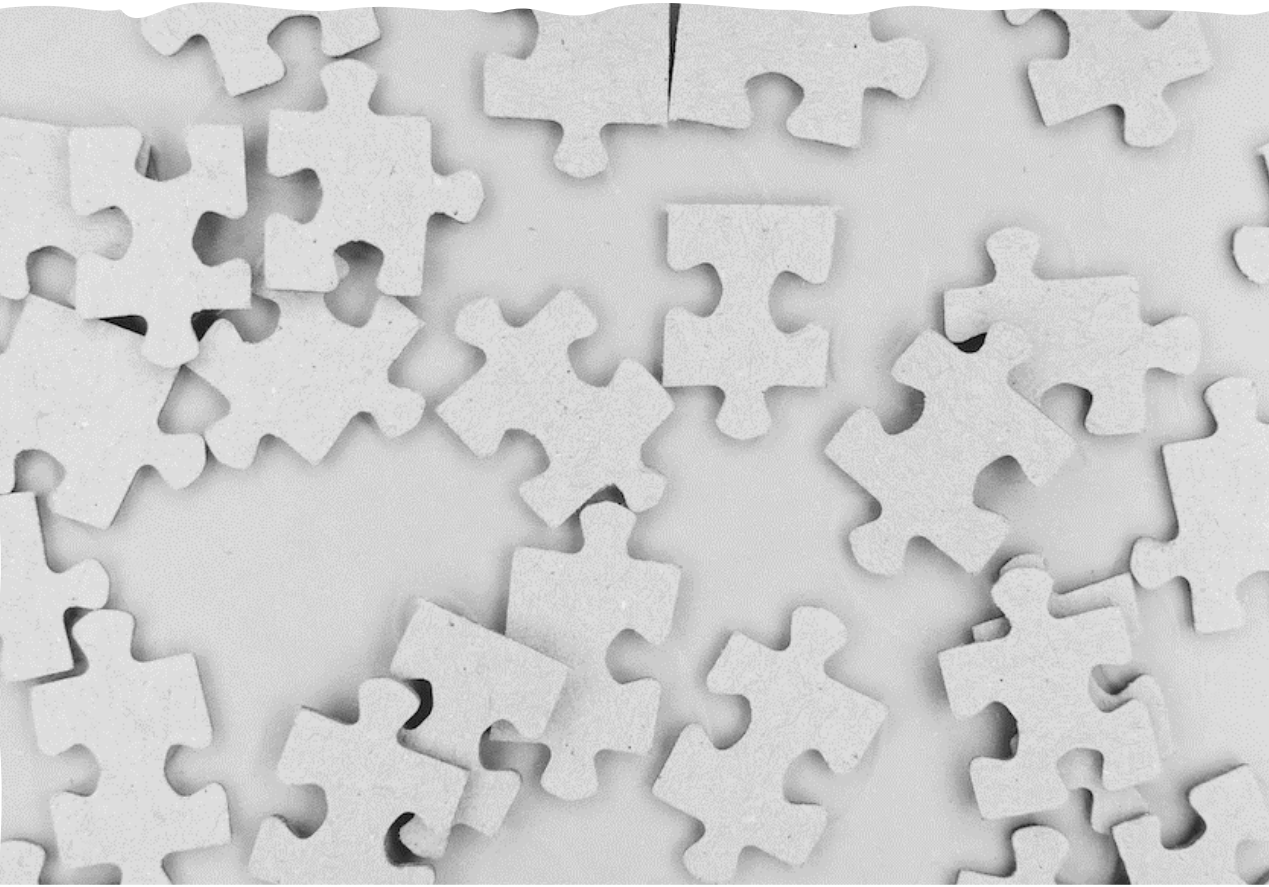
Real estate

Law

Behavioural science

Public involvement

How can the system of urban development decision-making
be influenced to create healthier environments?



Methods: Question development

Identifying the actors
and institutions

Identifying world views &
perception of problem

Understanding how
decisions are made
within the system

Community
involvement

Health
economic
valuation

Legal issues



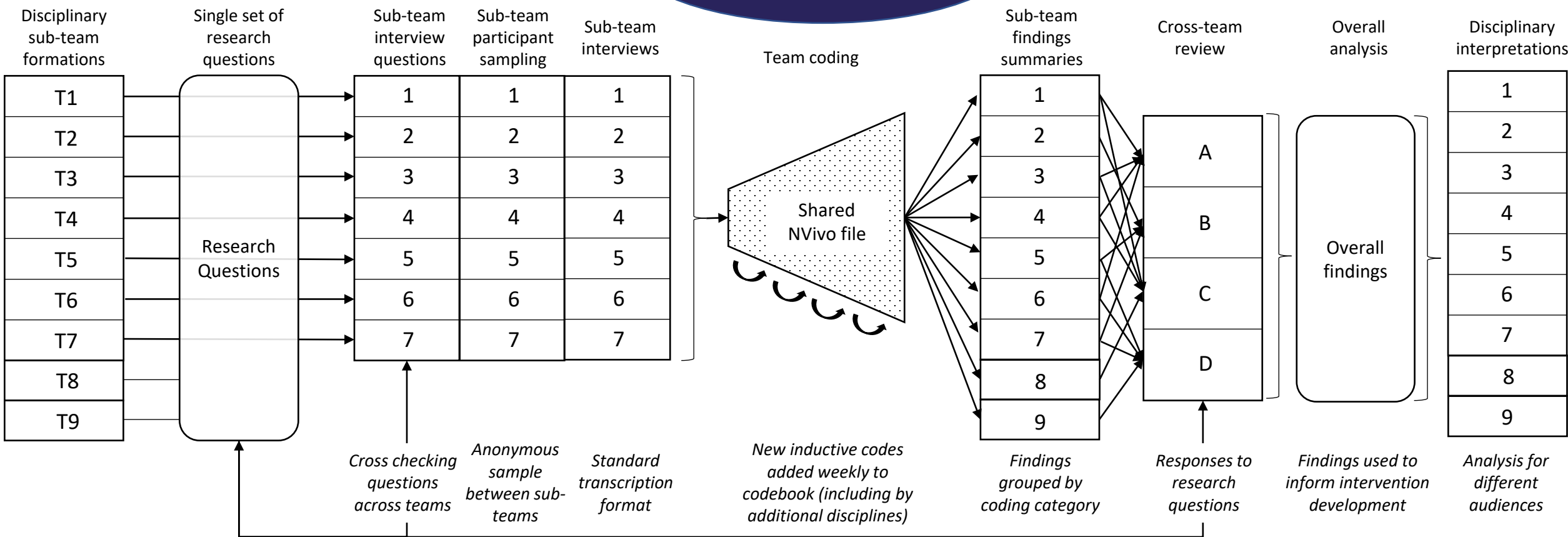
Methods: Sampling and interviewing

Stakeholder type	Local/ Regional government	National government	Private sector	Third sector	Total
Property development	5	2	24	0	31
Urban planning	15	3	5	3	26
Finance	0	3	18	0	21
Transport	6	3	3	1	13
Public health	7	2	0	2	11
Politician	8	1	0	0	9
Environment/ Sustainability	3	2	1	1	7
Other	5	4	2	3	14
Total	49	20	53	10	



Methods: Team coding and analysis

16 weekly team coding meetings



An aerial photograph of a suburban neighborhood, showing a grid of streets, houses with various roof colors (red, grey, brown), and green lawns. The image is split horizontally by a white band containing the word 'Findings'.

Findings

1. Competing priorities of different stakeholders (public & private)



*“...there’s a tension there in terms of as a local authority you want to be **supportive of development** ...but often in practice those do come at a cost and **the more constraints you put on development, sometimes the harder it is to get things developed, ...**” (Local government, property development)*

2. Getting around the rules: policies & legislation designed to control development



*“... the property sector from which I come is **untrustworthy** basically. We’ll leg over communities and places in order to make a **fast buck...**” (Private sector, property development)*

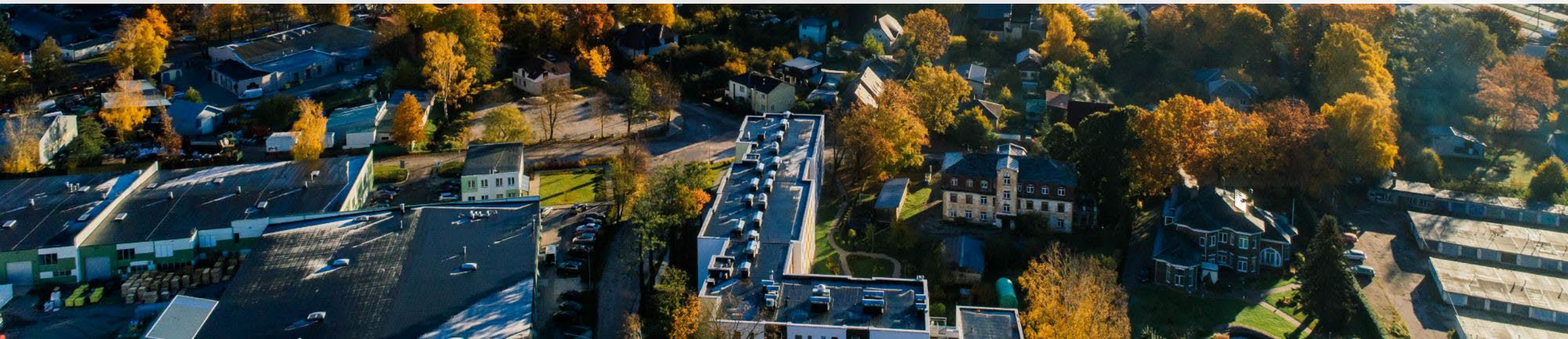
3. Difficulties in justifying a focus on health: lack of consensus around ‘healthy’ development



*“...you’ve got this horrendous policy in the [National Planning Policy Framework] which says we can only refuse things if the impact is severe. Now **define severe...** that’s **very hard to quantify.**” (Local government, transport)*



Implications for creating healthier places



Identifying leverage points in a complex system







Health & Place

Volume 81, May 2023, 103023









Understanding how to create healthier places: A qualitative study exploring the complex system of urban development decision-making

Anna Le Gouais ^a  , Geoff Bates ^b, Rosalie Callway ^a, Heeseo Rain Kwon ^c, Lisa Montel ^d, Sian Peake-Jones ^e, Jo White ^f, Md Nazmul Hasan ^g, Caglar Koksali ^e, Andrew Barnfield ^h, Krista Bondy ^g, Sarah Ayres ^h

Research Article

What needs to happen to 'level up' public health?

Sarah Ayres  , Andrew Barnfield , Geoff Bates , Anna Le Gouais  & Nick Pearce 



Tackling Root causes Upstream of
Unhealthy Urban Development

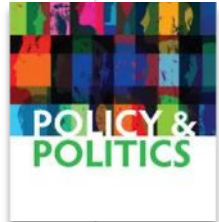


What types of health evidence persuade policy actors in a complex system?

Geoff Bates, gb818@bath.ac.uk
University of Bath, UK

Sarah Ayres, sarah.ayres@bristol.ac.uk
Andrew Barnfield, andrew.barnfield@bristol.ac.uk
University of Bristol, UK

Charles Larkin, cjl91@bath.ac.uk
University of Bath, UK



Montel *BMC Public Health* (2023) 23:310
<https://doi.org/10.1186/s12889-023-15166-0>

BMC Public Health

RESEARCH

Open Access

'Harnessing the power of the law': a qualitative analysis of the legal determinants of health in English urban planning and recommendations for fairer and healthier decision-making

Lisa Montel*



Contact

truud.ac.uk

Email: truud@bristol.ac.uk



@ResearchTruud

University Consortium



City/Combined Authority Partners



Professional Membership Partners



Research Funders



Newsletter sign-up



University Consortium



City/Combined Authority Partners



Professional Membership Partners



Research Funders



Acknowledgements

Thanks to TRUUD colleagues, particularly Geoff Bates, Rosalie Callway, Heeseo Rain Kwon, Lisa Montel, Sian Peake-Jones, Jo White, Md Nazmul Hasan, Caglar Koksai, Andrew Barnfield, Krista Bondy & Sarah Ayres.

This work was supported by the UK Prevention Research Partnership, an initiative funded by UK Research and Innovation Councils, the Department of Health and Social Care (England) and the UK devolved administrations, and leading health research charities.

Weblink: <https://ukprp.org/>

