



Tackling Root causes Upstream of  
Unhealthy Urban Development



# Bridging the gap from research to practice: the role of a Researcher-in- Residence

Dr Anna Le Gouais

Research Fellow (University of Bristol) & Researcher-in-Residence (Bristol  
City Council)

Anna.legouais@bristol.ac.uk

@AnnaLeGouais



## Research Funders



## University Consortium



## Local Authority Partners



## Professional Membership Partners



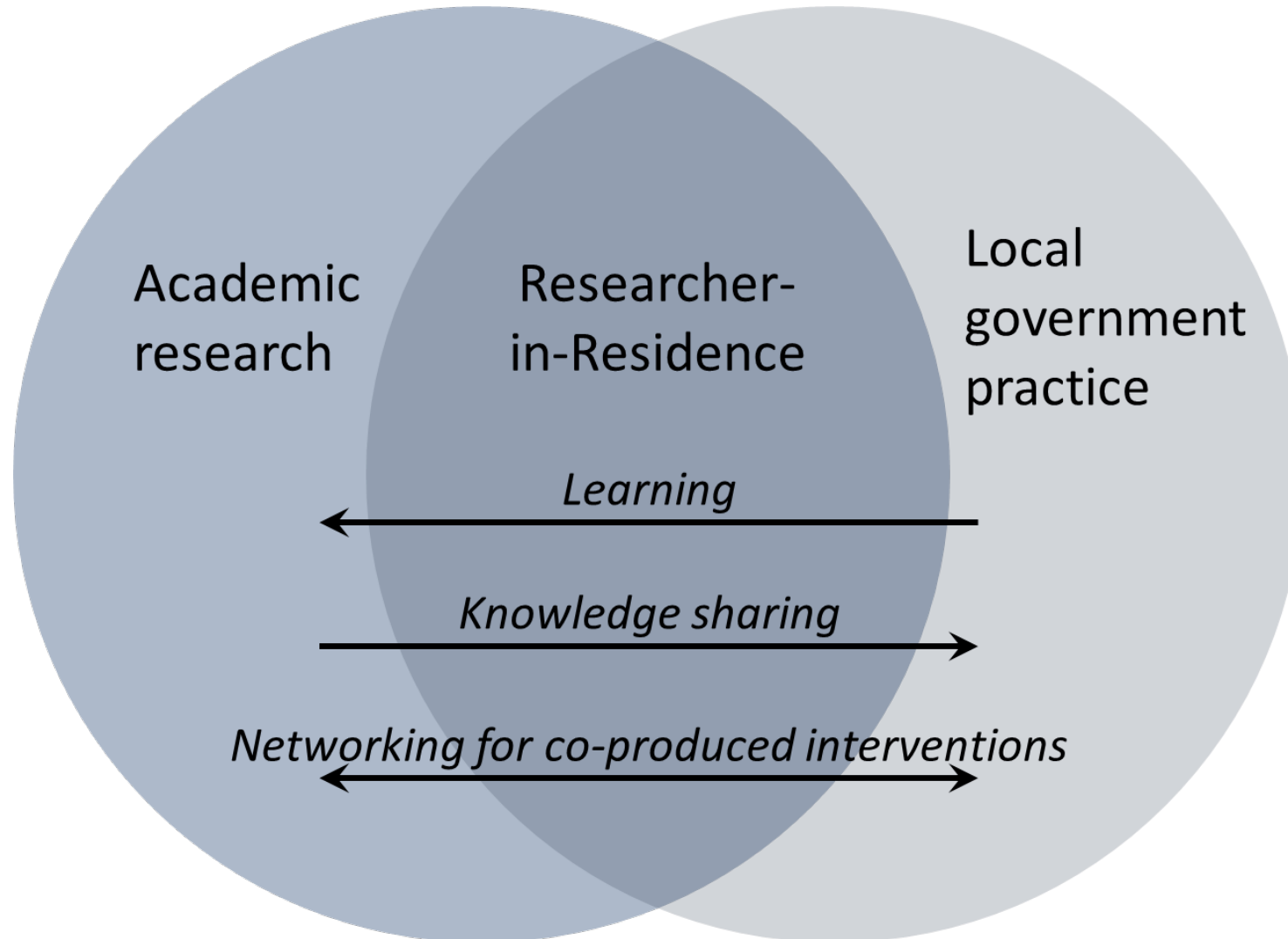






# TRUUD's embedded researcher approach

Tackling Root causes Upstream of  
Unhealthy Urban Development









# 1. Communicating health impacts to influence a regeneration framework



Photo: Bristol City Council, [www.fromegateway.co.uk](http://www.fromegateway.co.uk)



Image: Allford Hall Monaghan Morris



1. Housing design and affordability
2. Access to health and social care services and other social infrastructure
3. Access to open space and nature
4. Air quality, noise and neighbourhood amenity
5. Accessibility and active travel
6. Crime reduction and community safety
7. Access to healthy food
8. Access to work and training
9. Social cohesion and inclusive design
10. Minimising the use of resources
11. Climate change

## Health economic value of a new green park?

Improvements to green space quality and quantity could bring **£30 million additional benefits**, through improved mental health, and reduced risk of cancer and childhood obesity.

Health Outcomes



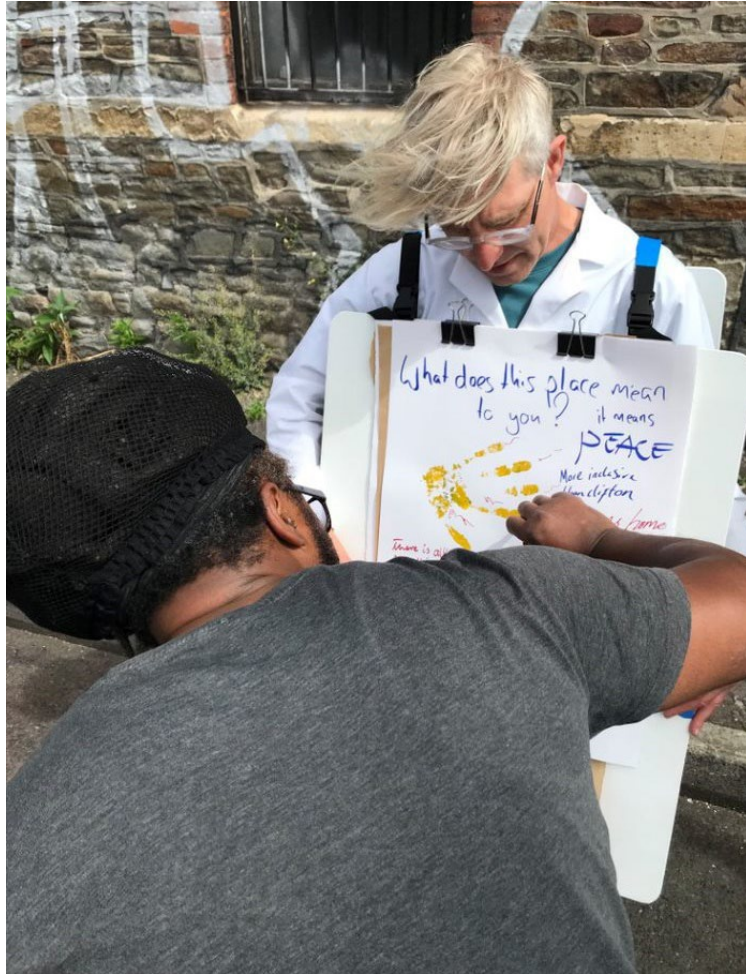
Provision of additional green space through a single unit, rather than dispersed across the site, may bring further reductions of risk of diabetes, to a value of **£21 million**.

Health Outcomes





## 2. Supporting public involvement in urban development



# 3. Integrating health in local plans

## Progressing Bristol's Development



A statement about planning in Bristol  
6/10/2020

Neighbourhood design

Healthy housing

Natural & sustainable environments

Review of 7 local plans

Healthy transport

Healthier food environments

 International Journal of  
Environmental Research  
and Public Health



Article

**Integrating Health into Local Plans: A Comparative Review of Health Requirements for Urban Development in Seven Local Planning Authorities in England**

Rosalie Callway <sup>1,\*</sup>, Anna Le Gouais <sup>1</sup>, Emma L. Bird <sup>2</sup>, Michael Chang <sup>3</sup> and Judi Kidger <sup>1</sup>

<https://www.mdpi.com/1660-4601/20/5/4079>



# What is a Researcher-in-Residence?

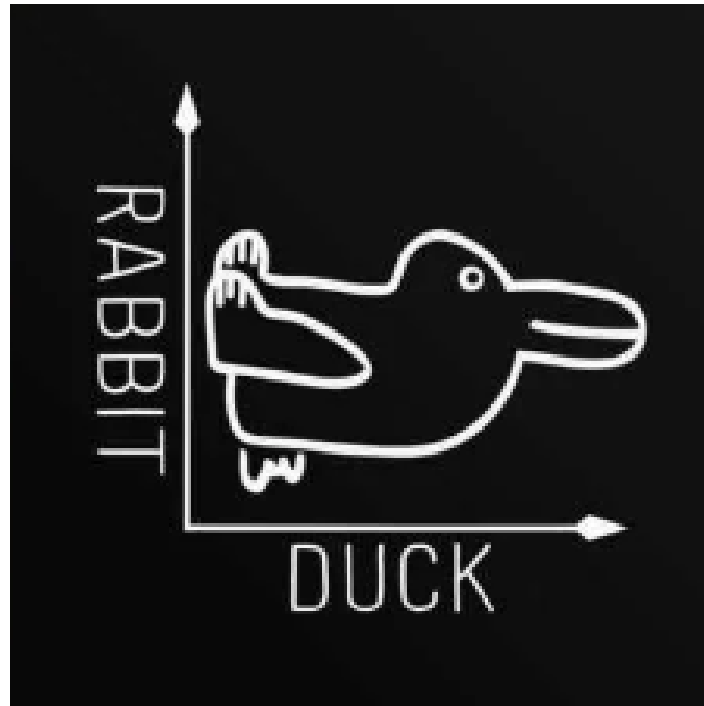
Tackling Root causes Upstream of  
Unhealthy Urban Development



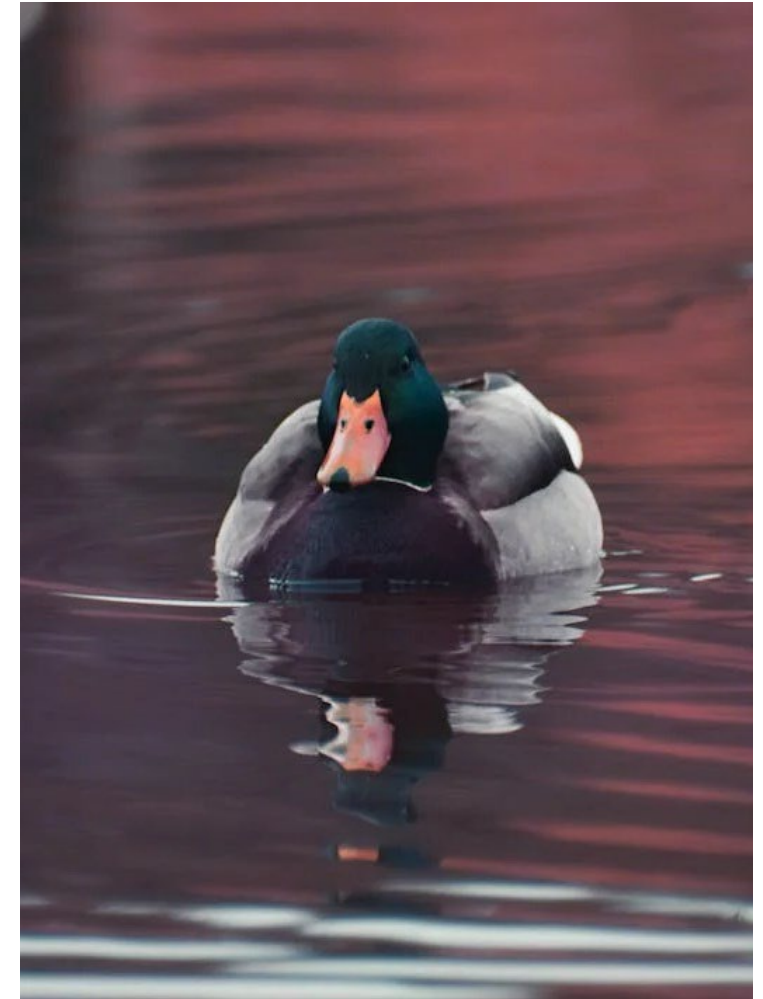
Academics



Researcher-in-  
Residence



Practitioners

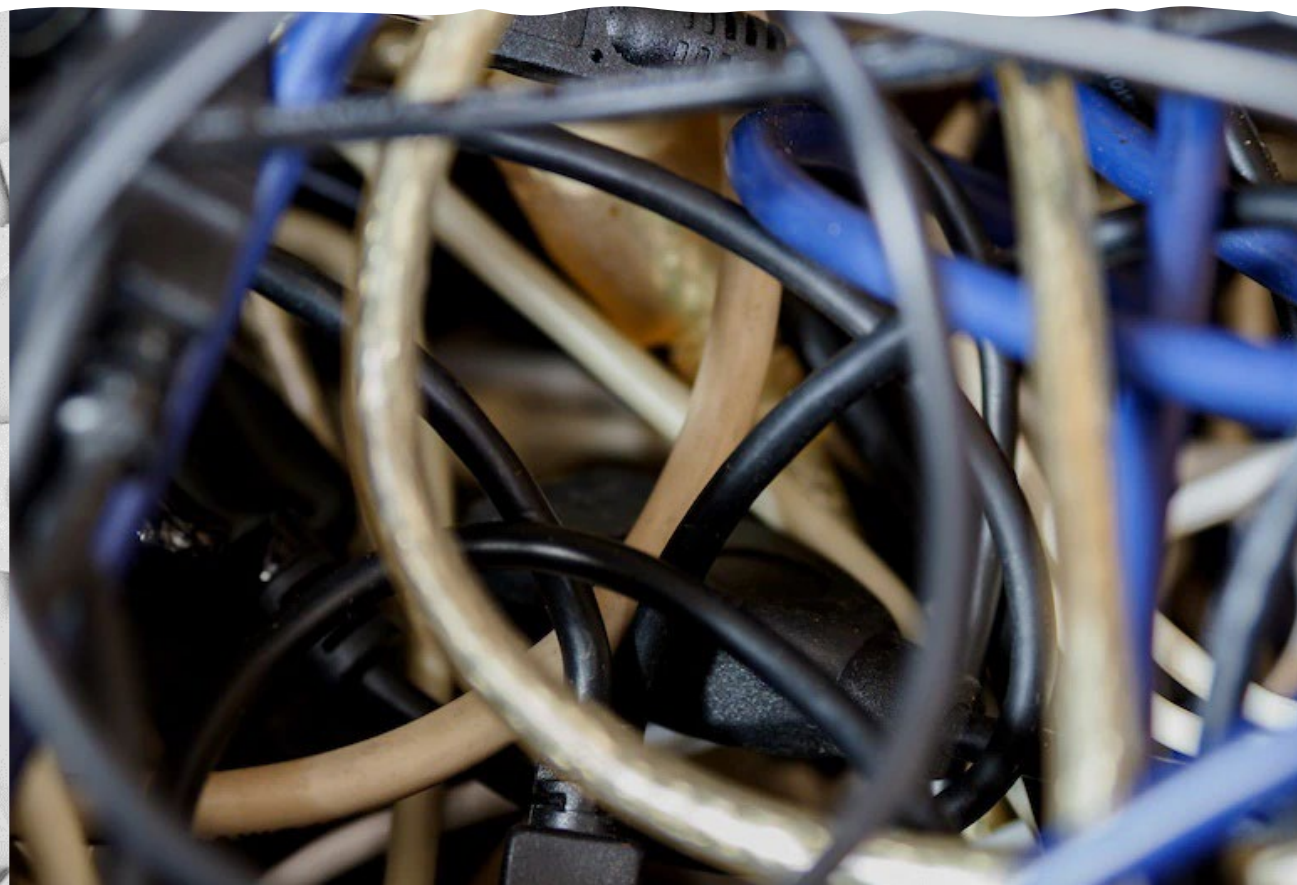




# Why embedded research?

Understand a complex system...

...to develop timely, relevant & impactful interventions



# Contact

---

[truud.ac.uk](http://truud.ac.uk)

Email: [truud@bristol.ac.uk](mailto:truud@bristol.ac.uk)



@ResearchTruud

## University Consortium



## City/Combined Authority Partners



## Professional Membership Partners



## Research Funders





# Newsletter sign-up



## University Consortium



## City/Combined Authority Partners



## Professional Membership Partners



## Research Funders



# Acknowledgements

---

Thanks to Bristol City Council and TRUUD colleagues.

This work was supported by the UK Prevention Research Partnership, an initiative funded by UK Research and Innovation Councils, the Department of Health and Social Care (England) and the UK devolved administrations, and leading health research charities.

Weblink: <https://ukprp.org/>

